

## 47. Run, Run, Run

If jogging is your passion, you can enjoy it to your heart's content, with low traffic volume, and an endless variety of routes and trails. Check out the Marshfield Area Runners Club to meet fellow joggers.

## 48. Upland Hunting

Take to the stubblefields or wooded groves in pursuit of the elusive ruffed grouse, turkey or pheasant. Prime hunting country can be found on public lands and private, managed hunting farms.

## 49. Barnspotting

Wisconsin's rich legacy of venerable barns can still be enjoyed in our part of the state. Explore our rural byways and discover these scenic treasures in various forms and settings.

## 50. Try Our B&Bs

All over our region, charming and unique bed & breakfast lodgings provide great getaways. From Victorian town homes to peaceful country homes, you'll find a favorite ... probably several.

## 51. Raise a Family

Choosing a safe, wholesome and life-enriching environment to raise your kids is just easier in north central Wisconsin.

## 52. Stay Balanced

Living and working in our area gives you a chance to enjoy a healthy mix of career pursuits and active lifestyle choices. Visit and see.

To arrange a personalized Hospital tour or for more information about the Marshfield area, please call us at 1-800-221-3733, ext. 77880, e-mail us at [sjhjobs@stjosephs-marshfield.org](mailto:sjhjobs@stjosephs-marshfield.org), or visit our Web site: [www.stjosephsmarshfield.org](http://www.stjosephsmarshfield.org)

 Saint Joseph's Hospital  
MINISTRY HEALTH CARE

611 Saint Joseph Ave. + Marshfield, WI 54449-1898  
800.221.3733 + [stjosephsmarshfield.org](http://stjosephsmarshfield.org)

# Love where you Live.

## 52 Things to Do In and Around Marshfield



 Saint Joseph's Hospital  
MINISTRY HEALTH CARE

## Marshfield, Wisconsin

A big part of the decision to pursue a career in any new town revolves around the town itself — its character, surroundings, amenities, lifestyle. Many people who choose to work in or around Marshfield do so, at least in part, because they are attracted to our area's qualities. To quote a Saint Joseph's

Hospital nurse, "Marshfield is like a little town, with a really big heart." It's also home to a world-class medical campus, surrounded by natural beauty, within easy reach of major urban centers, and packed with things to do.

## 52 Things to Do – All Year Around

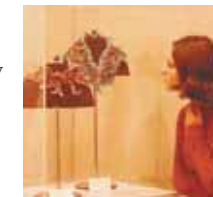
### 1. Foxfire Gardens

East meets West in an enchanting mix of classic Chinese, Japanese and European garden styles, with pools, winding streams and terraces.



### 2. Upham Mansion

Mid-Victorian architecture at its best! This restored home of former Wisconsin Governor William Henry Upham provides a glimpse of another era. The Heritage Rose Garden behind the house features a breathtaking collection of rose varieties.



### 3. New Visions Gallery

Located in Marshfield Clinic's lobby, this perpetually changing exhibit features a variety of art forms and significant works on loan from private and public collections.

### 4. Scenic Drives

As the landscape flows from small town to dairy farm country to the north woods, driving here is a delight. Rustic routes on quiet country lanes lead to prime fishing holes and perfect picnic spots.

### 5. Wildwood Park and Zoo

Established in 1937, Wildwood has grown to become one of the state's leading municipal zoos. On more than 60 acres, deer, elk, and buffalo roam freely in vast, natural enclosures. The park's winding trails are favorites for hikers, runners and bikers.

### 6. The World's Largest Round Barn

Centerpiece of the Marshfield Fairgrounds, the round barn was built in 1916 to house purebred animals. Measuring 150 feet wide and 70 feet high, it is a wonder to behold.



### 7. The Grand Theater

Less than an hour's drive from Marshfield, this magnificently restored theater is the crown jewel of Wausau's "ArtsBlock." The Grand hosts touring national musicals, dance and specialty programs, as well as productions by local theater and dance troupes and musicians.



### 8. The Highgrounds Veterans Park

One of the state's most spectacular views is in nearby Neillsville, with 140 acres overlooking a half million acres of woodland and glacial moraine. The site includes memorials to service people from World War I through the Vietnam War.

### 9. YMCA

Marshfield's "Y" provides the space, up-to-date equipment and classes you're looking for to pursue a healthy lifestyle.

### 10. Rib Mountain

Just west of Wausau, this massive outcropping of quartzite is home to Rib Mountain State Park with trails, picnic areas, overlooks, camping and Granite Peak ski hill, with the state's steepest vertical drop.



### 11. UWSP

The University of Wisconsin - Stevens Point is nearby with brilliant student theatrical and musical productions, sports and special programs.



# 52 Things to Do – in Town, in Nature, Around the Region.

## 12. Horseback Riding

Several area riding stables offer instruction and long, lazy trail rides through the scenic countryside.

## 13. Leigh Yawkey Woodson Art Museum

This world-class museum in Wausau features a number of outstanding visiting exhibits every year, along with its acclaimed permanent collection.

## 14. Downtown

Marshfield's central business district offers a broad mix of shopping and dining opportunities. From cozy coffee nooks to fine Japanese grill dining to eclectic shops and movies, downtown is on the go.



## 15. Camping

A short drive north of Marshfield is Chequamegon National Forest, a huge, pristine tract of north woods where camping enthusiasts can find an ideal spot to get away from it all.

## 16. Golf

Marshfield has two scenic, 18-hole courses. Many more are to be found throughout the region, offering a range of layouts and challenge levels.

## 17. Disk Golf

The other golf! At least three courses in the area are dedicated to this up-and-coming sport. It's a great way to get some exercise, fresh air and enjoy friendly competition.



## 18. Fall Color Tour

When the first cold snap hits, the hardwoods undergo a dramatic transformation. Oak, birch, maple, aspen and elm burst into a dazzling array of colors: deep reds, fluorescent yellows, rich golds — it's an annual, natural fireworks display.

## 19. Christmas Tree Farms

When the holiday season is in full swing, many people opt for a family outing to cut their own tree. Numerous area farms offer wagon rides, hot cider and loads of memories.



## 20. JuRustic Park

There's nothing like this anywhere else — scrap metal and found objects transformed into "life-size" dragons, dinosaurs and other creatures!

## 21. Take to the Water

For boaters, canoeists, waterskiers, swimmers, anglers and sightseers, our part of the state abounds with clean-water lakes, streams and rivers accessible through numerous parks and public launches.



## 22. George W. Mead Wildlife Area

Located on Marshfield's north side, this 20,000-acre tract includes highlands, marshlands, lakes and streams. Open year-round for hunting, fishing, hiking and reflecting on natural beauty.

## 23. Lodge at Cedar Creek Resort & Water Park

It's a short drive to Mosinee for year-round, indoor water fun for all ages. At 50,000 square feet, this is the largest indoor water park in northern Wisconsin, with slides, tubes, lazy river, whirlpools, and kiddie and adult areas. Hotel features 140 family-sized suites.



## 24. Snowmobiling

When the snow flies, the area's countless miles of trails heat up with touring snow-sledders. Ever-changing terrain and frozen lakes provide hours of adventure and discovery.

## 25. Cranberry Country

Several cranberry growers' farms are located in our area, along with popular cranberry festivals, guided tours and self-guided driving routes.

## 26. Hike/Bike Trails

Here, trails for hiking and biking aren't just short loops around a city park. You have miles and miles of options to find the perfect trail for you, or explore a new trail every time you head out.

## 27. Bird Watching

Birders enjoy a rich population to pursue their quarry. Several hawk species patrol the fields and farmland, soaring bald eagles are frequent sights, along with owls, songbirds, wild turkeys, the elusive prairie chicken and more.

## 28. Antiquing

Treasure hunters will find lots of places to seek rare, vintage furniture, artwork and collectibles. And prices here are hard to beat!

## 29. Winter Hill Thrills

In addition to towering Granite Peak ski resort, numerous, more gentle slopes in the area offer thrilling rides on tubes, sleds, snowboards and toboggans, including Powers Bluff in Arpin and at Neillsville Highgrounds.



## 30. Pumpkin Patches

When autumn arrives, don't settle for buying your seasonal pumpkins at a store or roadside stand; visit one of the area's many farms offering a chance to roam in a field filled with plump, orange beauties, and pick your favorite.



## 31. Let's Go to the Park

Our many city and county parks provide nearby access to camping, picnicking, swimming, boating, baseball, tennis, and many more activities in clean, well-kept surroundings.

## 32. Marshfield Fairs & Fests

Throughout the year, Marshfield moves from event to festive event, celebrating the arts, romance, dairy, autumn, crafts, holidays and more.



## 33. Orchard Tours

Area apple growers offer wagon rides and pick-your-own tours of sweet-smelling orchards, and a chance to stock up on homemade jams, jellies, ciders, berries and gifts.

## 34. Dining Out

From a classic Wisconsin fish fry to fine Continental or Asian cuisine, casual family dining or a quiet, romantic, candle-lit meal, going out for dinner can satisfy any taste or pocketbook.

## 35. Our Own State Fair

The Central Wisconsin State Fair held in late August and Labor Day Weekend offers a delightful mix of fun, including livestock exhibitions and competition, music, midway, scrumptious fair food and shopping.



## 36. Road Biking

Bicycle touring is popular in the Marshfield area. In addition to the vast network of natural trails, cyclists enjoy the many country roads for quiet, scenic rides past farms, pastures, woods and through nearby towns.

## 37. Coffee Breaks

A handful of downtown coffee shops offer relaxing atmospheres for a solitary respite, or regular meetings with friends over a steaming cup of your favorite brew.

## 38. Berry Picking

Strawberries, raspberries, blueberries — whether it's strolling the fields of a local berry farm or discovering a secret wild patch, you can enjoy a bountiful harvest.



## 39. Be a Sports Fan

Follow the super-charged exploits and rivalries of hometown and area elementary, high school and college teams throughout the school year.



## 40. Sshhh! – Silent Sports

For the kayaker, canoeist, cross-country skier, snowshoer, jogger, hiker, or mountain biker, it's easy to escape the hubbub and find quiet places to do your thing.

## 41. Work on Your Golf Game

Keep your edge and hone your swing at three area driving ranges, including a year-round indoor range where you can tee-off away from the elements. Polish your putting with mini golf, too!

## 42. Take in a Show

With the UW-Marshfield/Wood County Performing Arts Center and the LuCille Tack Center for the Arts in nearby Spencer, enjoy year-round performances, from Celtic music to jazz to comedy to kids' shows, and a gallery featuring local and touring exhibits.



## 43. Shopping

Marshfield and nearby communities, including Stevens Point and Wausau, offer a rich variety of retail destinations with malls, outlet stores, major department stores and regional specialties.

## 44. Be an Artist

Capture the beauty of our area on canvas, sketch pad or with your camera. Those with an eye for art quickly find captivating subjects, including quaint farmsteads, peaceful pastures, livestock and wildlife, rural and town scenes. A thriving visual art community provides an outlet to show your work.



## 45. Skate, Roll and Jump

Marshfield's scenic, 40-acre Braem Park has a 170' x 100' outdoor area with stunt ramps and other structures for roller-bladers, skateboarders and BMX bikers.

## 46. Further Your Education

With a pair of two-year campuses located in Marshfield (Mid-State Technical College-Marshfield and University of Wisconsin-Marshfield/Wood County), along with others in the region, you can pursue continuing education or earn an additional degree.

# Marshfield