

Siemens, SOMATOM® Definition Flash 128-slice, CT scanner



Split-Second Scanning

Diagnostic images can be acquired even from patients who cannot hold their breath or can not hold still.

For most adults

Entire chest in **less than 1 second**

Whole body in **less than five seconds**

For children

Many scans can be completed in **less than 1 second**



Defining Low Dose CT

With Dual Source technology and the Stellar Detectors the SOMATOM Definition Flash sets the benchmark for dose efficiency.

FAST CARE technology

Allows technologists to conduct high quality imaging that minimizes radiation dose levels, while spending more time with patients.





Please Join Us!

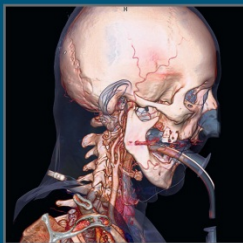
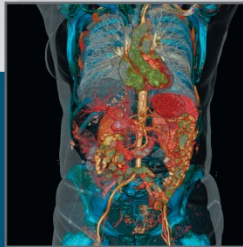
Open House for the new
CT Scanner

Wednesday, August 13
11 a.m. – 1:30 p.m.

Ministry Saint Michael's Hospital
HUB area



NOW FEATURING
Siemens SOMATOM[®]
Definition Flash



Agenda

11 a.m. Blessing by Father Dennis Lynch,
Ministry Saint Michael's Hospital Chaplain

11:05 a.m. Jeff Martin,
Ministry Saint Michael's Hospital President

11:10 a.m. Erik Borgnes, MD
Central Wisconsin Radiologists

Ongoing tours from 11:15 a.m. – 1:30 p.m.