



**TODAY.
TOMORROW.
TOGETHER.**

**ADULT LEVEL II TRAUMA CENTER
PEDIATRIC LEVEL II TRAUMA CENTER**

MARSHFIELD



MINISTRY
Saint Joseph's *Children's* Hospital



MINISTRY
Saint Joseph's Hospital

FROM THE TRAUMA MEDICAL DIRECTOR



Ministry Saint Joseph's Hospital
Administration

Brian Kief, CEO and President

Marshfield Clinic Administration

Karl Ulrich, MD, MMM, President

Good trauma care requires getting patients to the right place at the right time — available, definitive trauma care awaits the patient, instead of the patient waiting for care. When patients receive appropriate care after a traumatic event, chances of survival increase substantially and long-term complications decrease. Rapid response and delivery to a trauma center that can meet a seriously injured adult's or child's complex and extensive needs is critical to survival and recovery.

At Ministry Saint Joseph's and Ministry Saint Joseph's Children's Hospitals in Marshfield, we're proud to be a **Level II Adult and Pediatric Trauma Center**, verified by the American College of Surgeons (ACS)*. We have dedicated resources that provide:

- In-house trauma attending coverage 24/7.
- Immediately available surgical staff and surgical sub-specialists when they are needed.
- The region's only Pediatric Trauma Center and designated Children's Hospital — experts treating the special needs of injured children. Pediatric specialists provide top care in surgery, orthopedics, neurology and neurosurgery, physical medicine/rehabilitation, and child psychology.
- Ministry Spirit Medical Transportation in the air and on the ground.
- Education and advanced trauma training for EMS and other health care providers.

Each day, we work together with Marshfield Clinic physicians to deliver the highest-level care for patients of all ages. Local emergency response and community hospital ED teams throughout central and northern Wisconsin and Michigan's Upper Peninsula provide the first steps toward successful patient outcomes. Thank you for partnering with us in our promise to keep patients first in everything we do.

Sincerely,

Gaby Iskander, MD, FACS
Trauma Medical Director
Marshfield Clinic Trauma Surgeon
On Staff at Ministry Saint Joseph's Hospital
Marshfield, Wisconsin

* ACS/COT American College of Surgeons/Committee on Trauma

COMPREHENSIVE TRAUMA CARE

Ministry Saint Joseph's Hospital offers high-level, comprehensive trauma care for people of all ages. The 500+ bed tertiary referral center serves northern and central Wisconsin, as well as the Upper Peninsula of Michigan, and was the first in the region to be verified by the American College of Surgeons (ACS) as a Level II Adult Trauma Center and is the only Level II Pediatric Trauma Center.

Our coordinated team approach of trauma surgeons, physician specialists, trauma nurses, and other multidisciplinary personnel provides excellent care and strives to continually improve the health and well-being of all people in the communities we serve.

Our trauma team includes Marshfield Clinic surgeons and specialists who are among the 350 physicians in practice at the Marshfield campus. We are also dedicated to research and education in the prevention and treatment of traumatic injuries.



500+ Bed Tertiary Center

Designated Children's Hospital

350 Marshfield Campus Physicians

PEDIATRIC TRAUMA

Built for Kids

Ministry Saint Joseph's Children's Hospital, located within Ministry Saint Joseph's Hospital, is one of three designated children's hospitals in Wisconsin and the only one outside of Madison or Milwaukee. Research has shown that children have better clinical outcomes when treated at pediatric health care facilities with comprehensive trauma coverage. Our Pediatric Trauma Center provides advanced expertise in treating and preventing injury in young patients.

- Trauma surgeons and pediatric intensivists collaborate to manage care in the Pediatric Intensive Care Unit (PICU) and emergency department
- Trauma surgeons and pediatricians manage patients on the pediatric unit
- Nurses with specialized training and education in trauma provide care in both the PICU and pediatric unit
- High-touch, high-tech environment
- The only CARF* accredited pediatric rehabilitation program in the state
- Pediatric case management and social workers
- Child Life Program, funded in part by the Children's Miracle Network, helps children and families cope with the effects of injury and hospitalization

*Commission on Accreditation of Rehabilitation Facilities



Visit us online with your mobile phone barcode reader.

Get the free mobile app at <http://gettag.mobi>



MINISTRY.

Saint Joseph's *Children's* Hospital



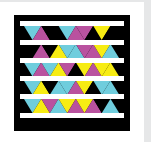
EMERGENCY TRANSPORT

Ministry Spirit Medical Transportation provides Advanced Life Support (ALS) care during the transport of critically ill or injured patients. In the spring of 2011, a second helicopter, based in Rhinelander, increased the availability of flight transport and reduced the time for patients to receive definitive treatment.

- Air and ground transport 24 hours a day, 7 days a week
- Staffed with nurses and paramedics experienced in trauma/critical care
- Vital evaluation and treatment at scene of injury, with direct communication to providers standing by in the emergency department
- Advanced medical care
- Advanced airway management
- IVs and medication administration
- Emergency department physicians serve as area EMS medical directors and help promote optimal trauma care management in the field
- Ministry Spirit vehicles and transport teams are specially equipped and trained for neonatal patients
- Intercept vehicles to assist Basic Life Support agencies



Our EC145 and AS350 helicopters offer advanced maneuverability and the latest safety features.



EMERGENCY ROOM CARE

In the emergency department, trauma surgeons, emergency department physicians, nursing staff and other team members rapidly assess and evaluate patients to determine the nature and extent of injuries. State-of-the-art technologies are utilized in lifesaving intervention and stabilization.

- Bedside ultrasound for rapid assessment of internal hemorrhage
- Rapid warm large volume IV infuser
- Advanced temperature technology system for cooling and warming
- Emergency thoracotomy equipment
- Emergency management of difficult airways
- CT scan within the emergency department





TRAUMA SURGICAL SERVICES

Our surgical trauma staff has specialized teams available to manage surgical emergencies as they present.

- In-house trauma surgeon available 24 hours a day
- In-house surgical staff, surgical subspecialists and anesthesiologists ensure immediate surgical intervention is available whenever it is needed; 19 surgical suites

SURGICAL INTENSIVE CARE

Patients managed by dedicated surgical critical care intensivists have shown improved outcomes and decreased length of stay.

- In-house surgical critical care physicians available 24 hours a day
- Dedicated 26-bed trauma/surgical critical care unit staffed by trauma/surgical intensivists
- Nurses with specialized training and education in trauma provide high-quality care
- State-of-the-art equipment for cardiac, respiratory, and central nervous system monitoring
- Expertise in pain management



A Trauma Journal is available to help support families impacted by trauma

Specialists at Ministry Saint Joseph's Trauma Center are available for consultation and patient referral 24/7. Call MinistryConnect at 888.411.1DOC for easy access and no-hassle service.

EXPERIENCED & HIGHLY-SKILLED PHYSICIANS

Trauma Surgeons
General Surgeons
Emergency Medicine
Neurosurgeons
Orthopedic Surgeons

Plastic Surgeons
ENT Surgeons
Anesthesiology
Interventional Radiology
Imaging Services

Pediatric Intensivists
Pediatric Hospitalists
Hospitalists
Oral & Maxillofacial
Surgeons

Cardiothoracic Surgeons
Radiology
Palliative Care
Physical Medicine
& Rehabilitation

FROM INJURY THROUGH REHABILITATION

Our partners throughout northern and central Wisconsin and the Upper Peninsula of Michigan provide the first steps toward successful patient outcomes through:

- Emergency response teams (EMS)
- Community hospital emergency departments
- Ministry Spirit Medical Transportation

Trauma physicians manage trauma patients throughout their hospitalization. Other staff specially trained in trauma — RNs, respiratory therapists, PT/OT, physician assistants, nurse practitioners, social workers, case managers, dietitians and pharmacists — collaborate to provide patients with high-quality, compassionate, care throughout their stay.

Additionally, a 21-bed CARF* — accredited rehabilitation unit is available on-site for adolescents and adults as well as a 4-bed CARF accredited pediatric rehabilitation program, the only one of its kind in the state.

*Commission on Accreditation of Rehabilitation Facilities



EDUCATIONAL PROGRAMS

Ministry Saint Joseph's Hospital is committed to educating RNs, EMS, other health care providers and the communities we serve, an important component of trauma center verification. In addition to graduate medical education, we offer a number of educational programs that specialize in trauma care. Our partnership with the American College of Surgeons allows us to provide the best in trauma and critical care education.

Outreach and Lectures

We work closely with EMS departments and community hospitals across Wisconsin to provide quality adult and pediatric trauma education. We have developed a series of programs taught by trauma staff, pediatric intensivists and others.

- Pediatric Trauma Resuscitation
- Care of the Special Needs Child
- Pediatric Pain Management
- Communicating with Children and Families
- Pediatric Predicaments: A Case Review
- Outreach education available to community organizations

Specialized Trauma Educational Programs

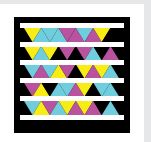
- Trauma Nurse Core Course (TNCC)
- Pre-Hospital Trauma Life Support (PHTLS)
- Advanced Trauma Life Support (ATLS)
- Advanced Trauma Care for Nurses (ATCN)
- Emergency Nurse Pediatric Course (ENPC)
- Pediatric Education for Pre-hospital Providers (PEPP)
- Rural Trauma Team Development Course (RTTDC)
- Trauma Case Review

In partnership with Marshfield Clinic, we offer numerous medical residencies including internal medicine, general surgery, pediatrics, in addition to a critical care nurse residency program.

Take advantage of educational programs by contacting Ministry Health Care's Education Department at **800.273.3644**



Visit us online at
ministryhealth.org/traumaeducation
to learn more.

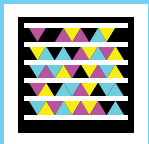


INJURY PREVENTION

Our trauma center staff knows that injury prevention is one of the best forms of trauma care. Most prevention programs are offered free of charge. The Children's Miracle Network and The Foundation of Saint Joseph's Hospital assist with sponsoring these programs. For more information about prevention programs, please contact our injury prevention coordinator at **715.387.9566**.

Our campus is also home to the National Farm Medical Center (NFMC). The NFMC has spent years researching and developing programs to keep our children and adults safe on the farm. marshfieldclinic.org/nfmc

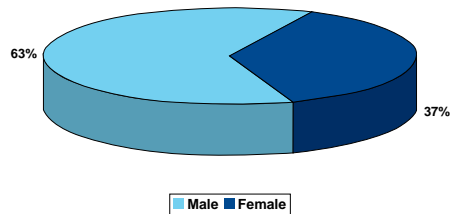
- Ministry Spirit Medical Transportation mock scenes
- Ministry Spirit landing zone safety classes
- 55 Alive mature driving class
- Bike Safety programs
- Gun Safety programs
- Senior Steps elderly fall prevention
- Safe Kids car seat safety checks
- ThinkFirst for Kids, ThinkFirst for Youth and ThinkFirst for Teens



TRAUMA REGISTRY

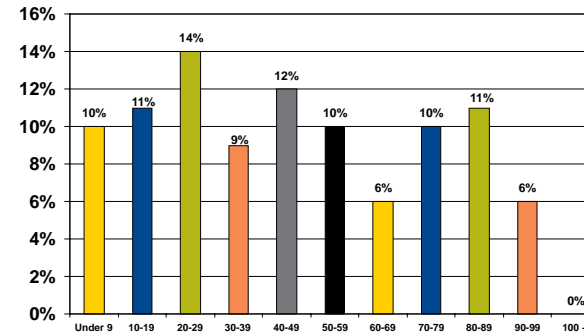
Each trauma center must maintain a comprehensive database of the injured patients treated within the hospital from the time of injury until discharge. The data collected supports performance improvement, outcomes research and resource utilization as well as providing local, regional, state and national agencies with the necessary data for planning and injury prevention initiatives.

Ministry Saint Joseph's Hospital Trauma Registry
Total Trauma Population
2010 Gender

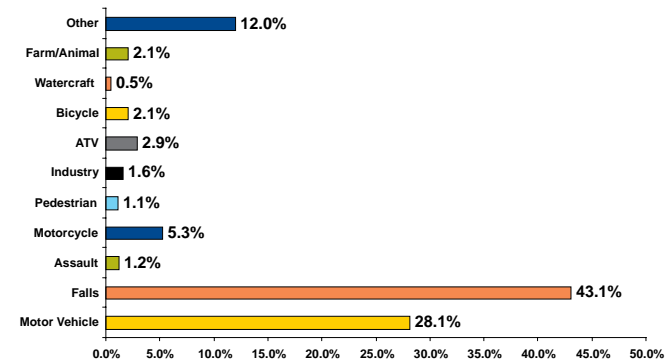


*Until age 70, males suffer traumatic injury significantly more often than females.
In the 20 to 29 age group, men outnumber women by four to one.*

Ministry Saint Joseph's Hospital Trauma Registry
Total Trauma Population
2010 Patient Age Groups



Ministry Saint Joseph's Hospital Trauma Registry
Total Trauma Population
Injury By Cause 2010

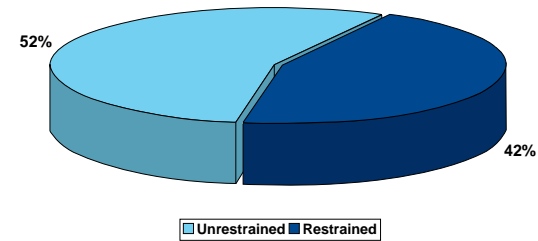


PROMOTING PREVENTION

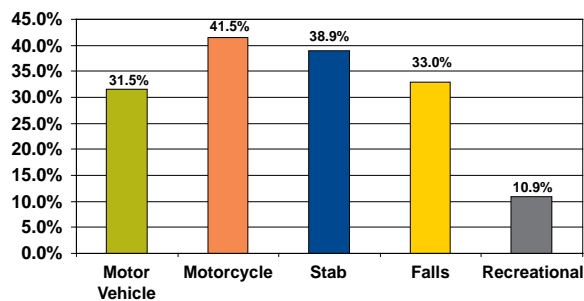
Less than half of our adult and pediatric trauma patients involved in motor vehicle collisions used safety belts or car seats. Lack of safety belt use, distractions and lack of driving experience are major causes of traffic fatalities for young people.

Alcohol/drug abuse contributes to escalating incidence of traumatic injury. Among our trauma patients in 2010, alcohol was a contributing factor in 25 percent of traumatic incidents and over 30 percent of motor vehicle and motorcycle collisions, stabs and falls.

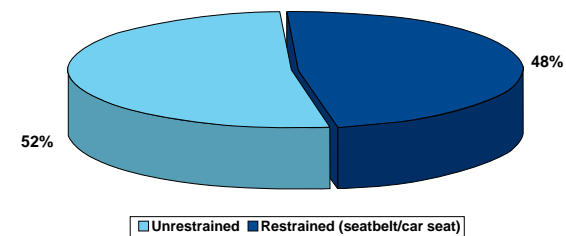
Ministry Saint Joseph's Hospital Trauma Registry
2010 Adult Seat Belt Usage



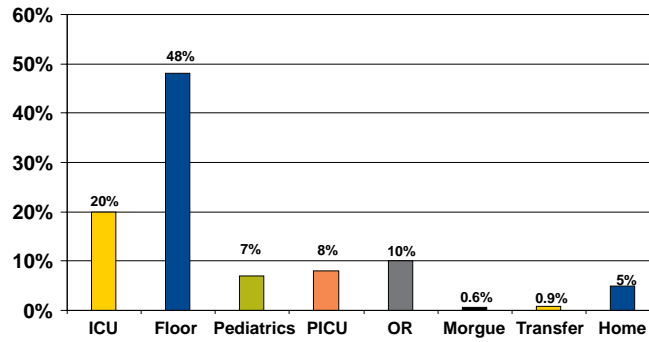
Ministry Saint Joseph's Hospital Trauma Registry
2010 Positive Blood Alcohol Levels
by Mechanism of Injury



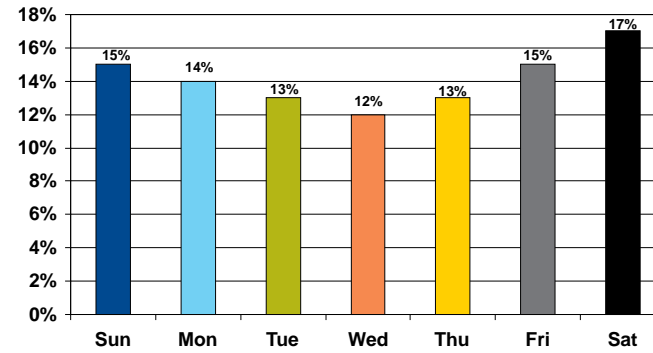
Ministry Saint Joseph's Hospital Trauma Registry
2010 Pediatric Seat Belt/Car Seat Usage



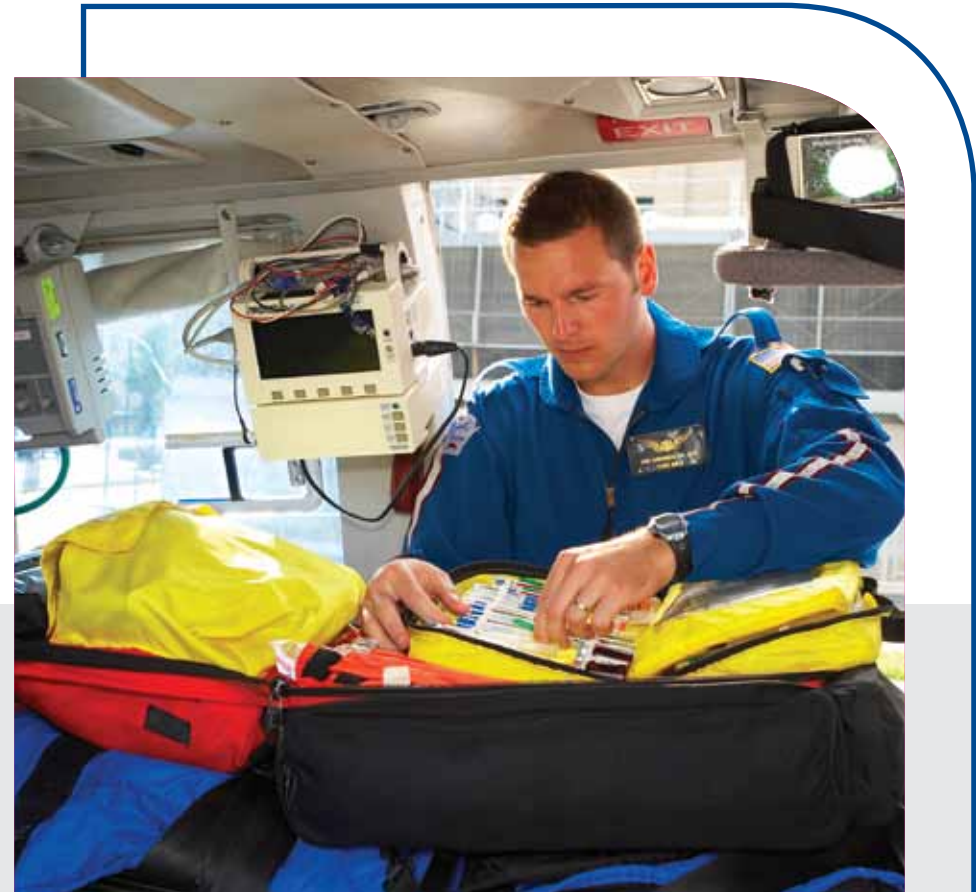
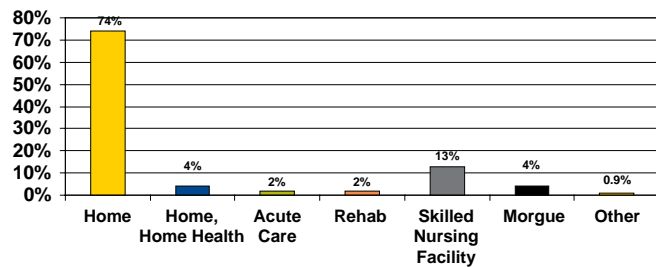
Ministry Saint Joseph's Hospital Trauma Registry
Total Trauma Population
2010 E.D. Disposition



Ministry Saint Joseph's Hospital Trauma Registry
Total Trauma Population
2010 Admissions by Day of Week



Ministry Saint Joseph's Hospital Trauma Registry
Total Trauma Population
2010 Hospital Disposition



TRAUMA LEADERS

Hospital Staff

Terry Nichols, RN, MSN
Trauma Program Manager

Mike Trelow
Trauma Registry Coordinator/Data Analyst

Deb Gojmerac, RN, BSN
Trauma Registrar

Amy Schmidt, RN, BSN
Injury Prevention/Pediatric Trauma
Coordinator

Jan Simonson, RN, MSN
Trauma Performance Improvement
Nurse Clinician

Christine Schaefer
Administrative Assistant

Clinic Trauma Staff

Gaby Iskander, MD – Trauma Medical
Director/ICU/Trauma Surgeon

Henry Grant, MD, FACS
Trauma/ICU Surgeon

Sam Picone, MD
Trauma/ICU Surgeon

Iván Maldonado, MD, FACS
Trauma/ICU Surgeon

Cathryn Chadwick, MD
Trauma/ICU Surgeon

Jean Balz, PA

Chris McCarthy, NP

Rich Nesbit, PA

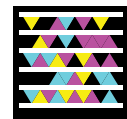
Megan Johnson, NP

To request information on our trauma program, please call Terry Nichols at 715.389.5756

To request information on Injury Prevention/Pediatric Trauma, please call Amy Schmidt at 715.387.9566

To request a patient referral or transfer, contact Ministry Connect at 888.411.1DOC (1362)

Visit us online with your mobile phone barcode reader.



Get the free mobile app at <http://gettag.mobi>